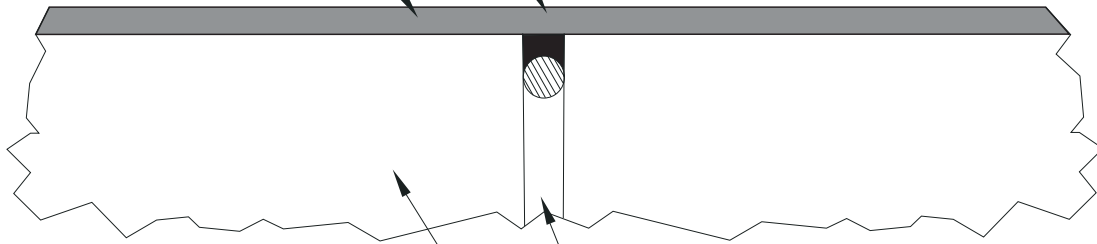


BACKER ROD COMPRESSED
MIN 25% AND SERIES 265 OR
FLEXIBLE JOINT SEALANT

ELASTO-SHIELD
LINING SYSTEM

EXISTING CONCRETE SUBSTRATE

EXISTING ISOLATION
JOINT MATERIAL



NOTE: FLEXIBLE JOINT SEALANT WIDTH-TO-DEPTH RATIO SHOWN APPROXIMATELY 2:1.

TNEMEC ELASTO-SHIELD STANDARD LINING DETAILS

EXPANSION JOINT TREATMENT DETAIL

NO. ELS-5

REV. 0